



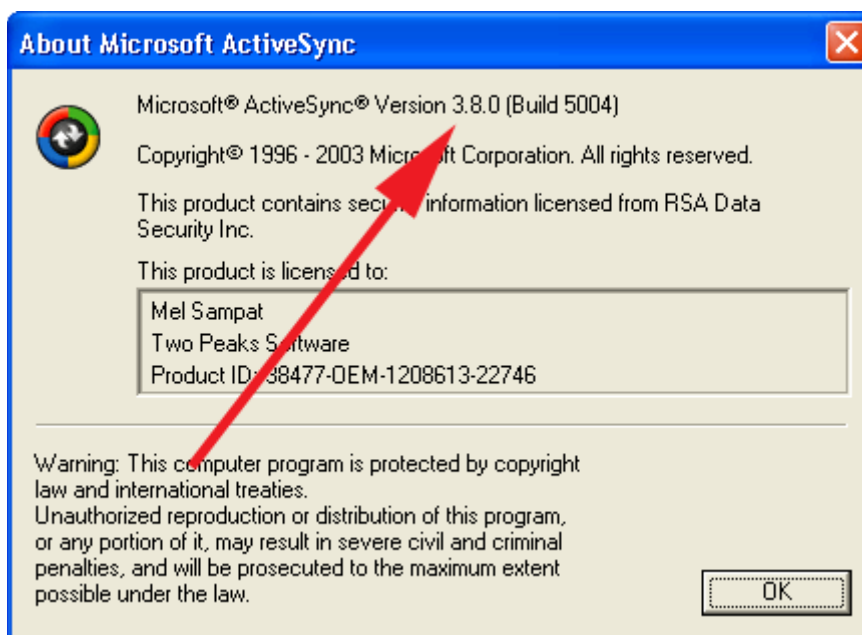
Personal Vehicle Manager 2005

Getting Started Guide

Welcome to Personal Vehicle Manager 2005! This guide will help you install the application on your desktop computer and Pocket PC or Smartphone device, and set up automatic data synchronization using Microsoft ActiveSync.

Steps by step instructions:

1. Before installing, ensure that you have the latest version of Microsoft ActiveSync. To check the version installed on your computer, click **Help > About Microsoft ActiveSync** in the ActiveSync window.



Visit www.microsoft.com/windowsmobile/downloads to verify that the latest release from Microsoft matches the version on your computer. ActiveSync v3.7 or higher is recommended.

2. Soft-reset your Pocket PC or Smartphone device to ensure that no applications are running in the background, which may interfere with the installation. Immediately after performing a soft-reset, connect your device to the desktop and wait until ActiveSync has completed syncing all your other items (Calendar, Contacts, Tasks, Inbox etc.)

3. Close all non-essential applications on your desktop computer to ensure a smooth installation.
4. If you haven't done so already, download Personal Vehicle Manager 2005 from our Web site at www.twopeaks.com and run the installer on your desktop computer. We recommend selecting the default choices for each step of the Setup wizard. Towards the end, you are asked whether to install PVM on your Pocket PC or Smartphone device. Select **Yes** unless you wish to postpone the mobile portion of the installation. The program can be installed either in main memory or an external storage card on your mobile device.
5. **Important:** After installation completes, disconnect your mobile device from the desktop computer. Before proceeding to the next step, ensure that ActiveSync's status is *Not Connected*.
6. Locate the newly installed *Personal Vehicle Manager 2005* icon on your desktop computer and double-click it to start the program.



7. The following dialog box is presented when you first use the program.



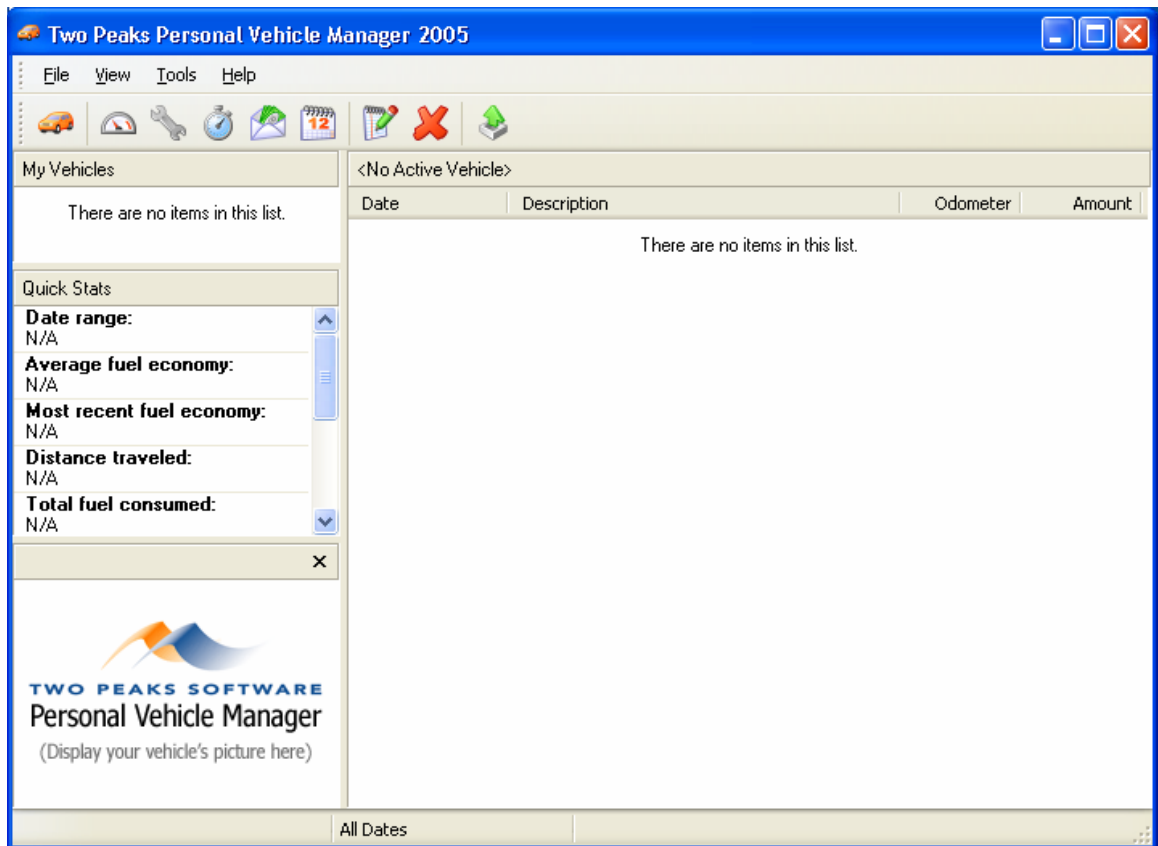
Ensure that the **Create a new database file** option is selected and press **OK**. You are asked for a location to store the PVM data file. This is the single file in which all the data for all your vehicles is stored. Select a safe location that is easy to remember and backup. By default, the program suggests creating **My Vehicles.dat** under your *My Documents* folder. The file name and location can be changed if you wish.

*Note: The data file's location has no effect on syncing data with your mobile device. The data file itself does not get synced, so it should **not** be stored in any special folder such as "Pocket_PC My Documents".*

8. You will now need to set your preferred units for distance and volume. Click **Tools > Options** and make the appropriate selections.

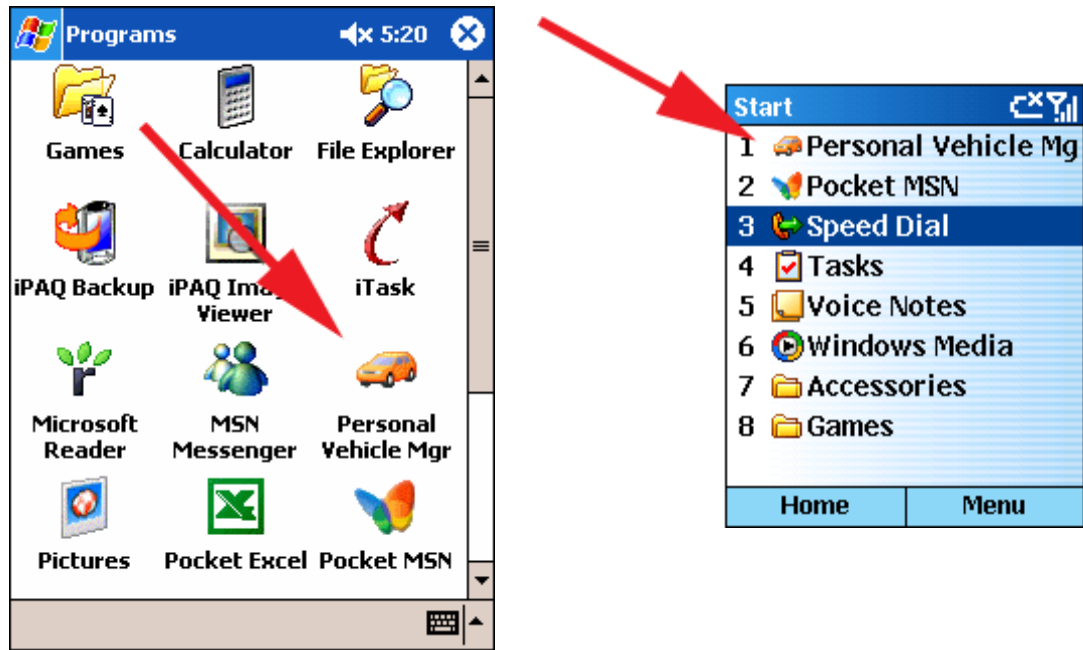
Note: The units should not be changed once data has been entered into the program, so it is very important to make the correct selections now.

9. Finally, the program should start up with several empty lists since you obviously do not have any data at this point.

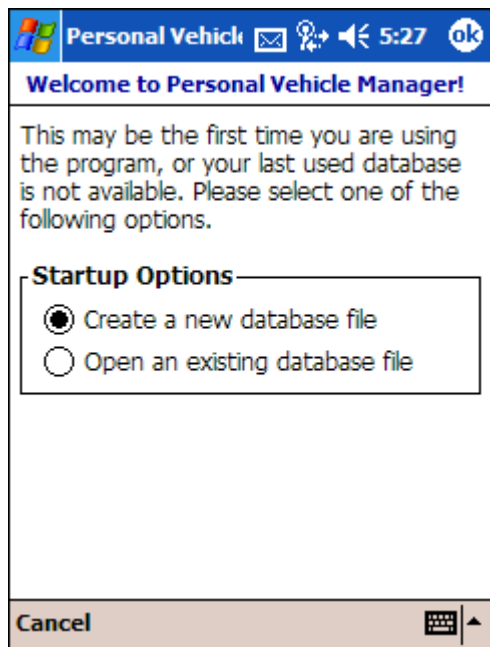


Click **File > Exit** to close the desktop edition for the time being. We will now set the program up on your mobile device.

10. Ensure that your Pocket PC or Smartphone is still *disconnected* from the desktop computer. Then start the program by locating it under your device's **Start** menu.



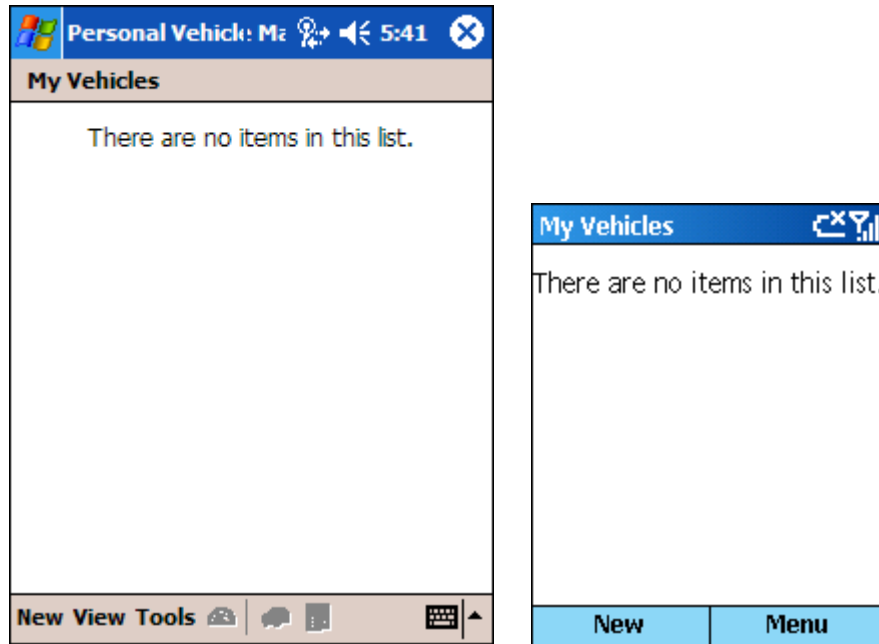
11. On the Pocket PC, you will see a dialog box similar to the one in step 7 above. As before, we want to *Create a new database file*.



Unlike the Pocket PC, this dialog box will never be displayed on a Smartphone. Instead, the Smartphone edition automatically creates and uses the following file: **\Storage\My Documents\My Vehicles.dat**.

12. After your data file has been set up, Personal Vehicle Manager should start normally. As before, select the units for distance and volume (**Tools > Options** on the Pocket PC, or **Menu > Options** on the Smartphone).

13. You should now see an empty *My Vehicles* screen.



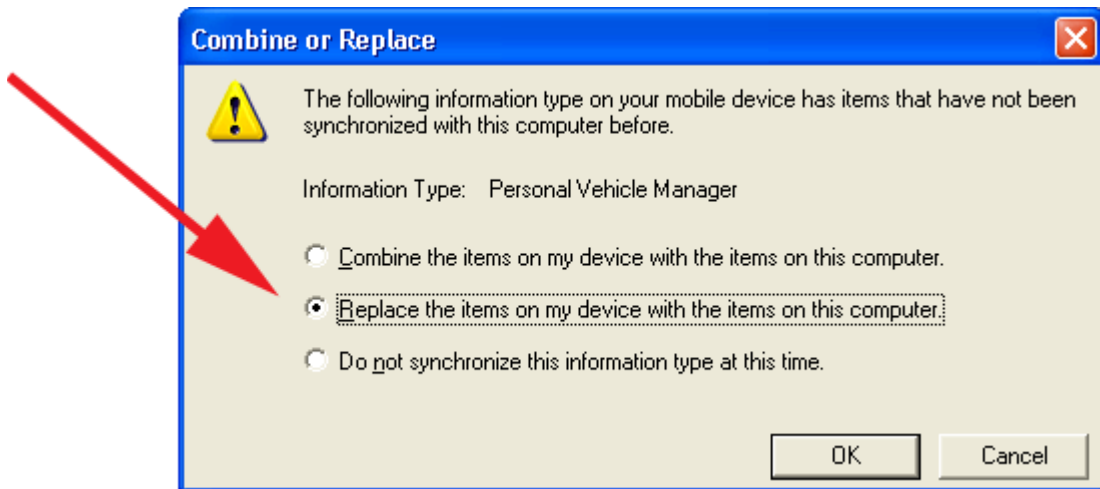
Exit the program (**Tools > Exit** on the Pocket PC, or **Menu > Exit** on the Smartphone).

14. Now connect your Pocket PC or Smartphone to the desktop. ActiveSync should start looking for changes, and *Personal Vehicle Manager* will be one of the information types listed.

Note for wireless users: Since this is the first time we are syncing PVM, the device must be physically connected to the desktop (USB or serial port). If you connect using a WiFi network, PVM's status in ActiveSync will show "Attention Required" and you will be unable to set up synchronization at this time.

15. ActiveSync will display a dialog box offering you several choices to sync Personal Vehicle Manager data (see screenshot below). The most appropriate choice for first time users is *Replace the items on my device with the items on this computer*.

Combine items... will result in duplicate entries and should **not** be selected unless your mobile device has more data than the desktop computer, which is highly unlikely.



16. When ActiveSync shows Personal Vehicle Manager's status as *Synchronized*, you are ready to start using the program and have all your data automatically synced with the mobile device. To test it out, start the desktop edition and create a new vehicle by clicking **File > New > Vehicle....** ActiveSync will sync your newly created, modified, or deleted items automatically.

Important Note:

Due to certain technical limitations, it is not possible to use Personal Vehicle Manager on your mobile device while it is connected to the desktop. So in order to test the items synced from your desktop, your device will first have to be removed from its cradle. Also, if the program is already open when your device connects to the desktop computer, it will automatically shut down on the device side.

More information

To obtain the latest version of Personal Vehicle Manager 2005, more technical information, or to request customer support please visit our Web site at www.twopeaks.com.

This document was last revised on March 16, 2005.

Copyright © 2005, Two Peaks Solutions Inc.
The information in this document is subject to change without notice.

Microsoft, Windows, Pocket PC, Smartphone and ActiveSync are registered trademarks or trademarks of Microsoft Corporation in the United States and/or other countries.